

# Architectural Acoustics

## Acoustic decorative coating controls noise reverberation

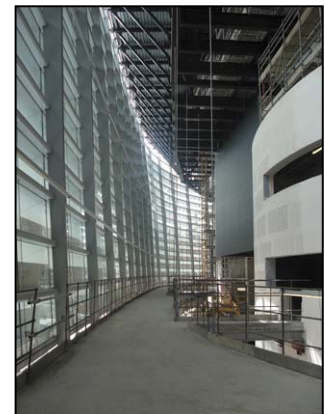


Leicester Performing Arts Centre, a new theatre development in Leicester was awarded a £12m grant by Arts Council England.

The new centre, has replaced the city's Haymarket and Phoenix venues.

The glass-fronted, dual-stage theatre has been designed by architect Rafael Vinoly, runner-up in the competition to develop New York's Ground Zero.

This large project required the latest in architectural acoustics. **SonaSpray K-13** in black was applied to the **corrugated soffit** of the outer ring at **75mm** thick in **one coating** by **Oscar Acoustics'** trained site teams. Applying through coloured K-13 Black, (many other standard colours available including white, beige, blue and grey), ensured there was no need to over paint and therefore loose valuable architectural acoustic performance. **Spraying in black** also meant that the ceiling had an endless feel to it.



Public circulation is concentrated at street level where the box office and public restaurant are located, attracting visitors even during non-performance hours. Administration, rehearsal facilities and support spaces are located below the architectural acoustic treatment in a perimeter building with circulation balconies at upper levels that ring the foyer and allow physical and visual connection between staff, performer and audience.

**SonaSpray** economically **solves** noise **reverberation** problems

Article by D.Mack of Oscar Acoustics. For more advice on Acoustic Solutions and noise Insulation go to <http://www.oscar-acoustics.co.uk>